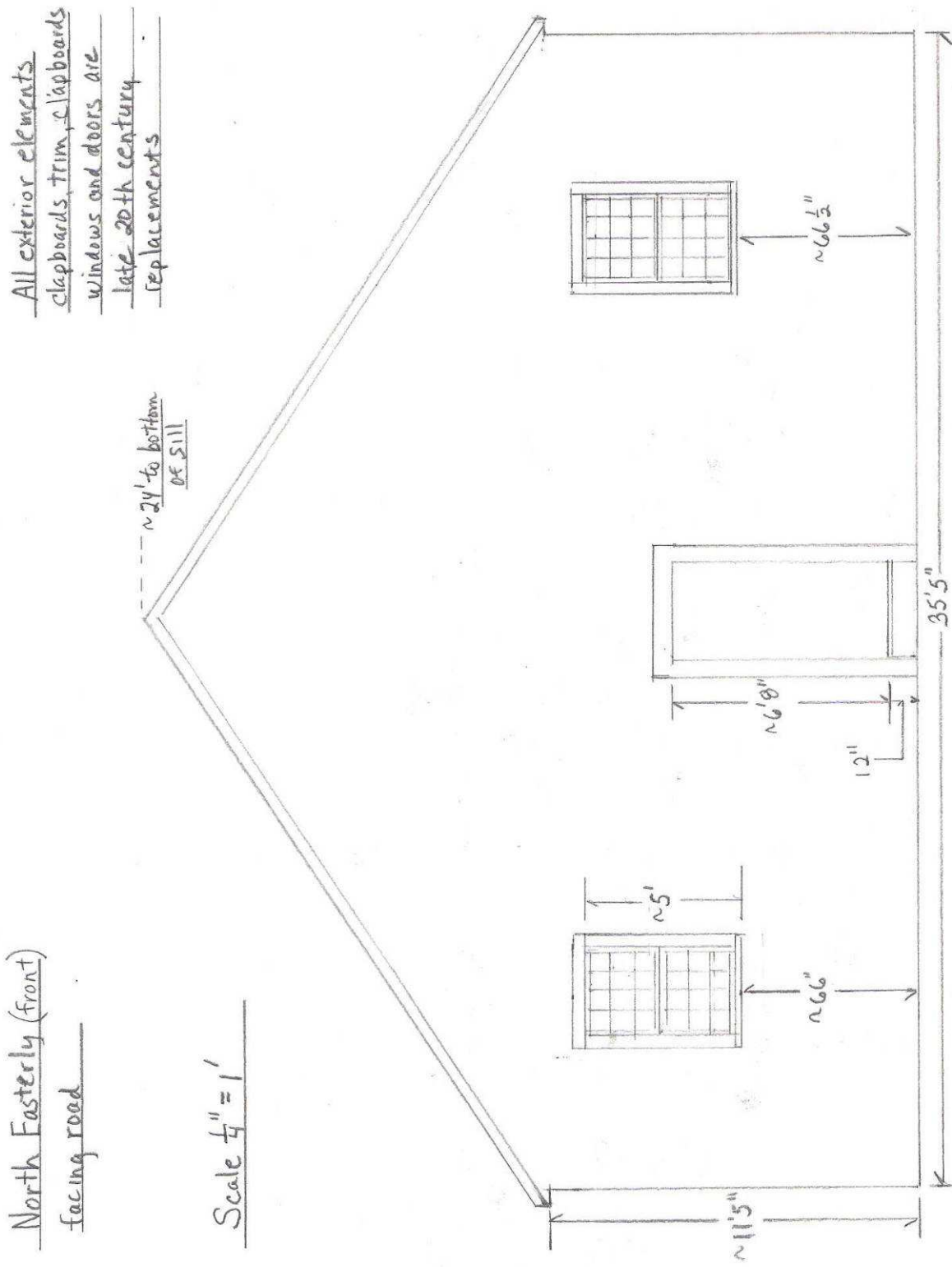


Measured Drawings

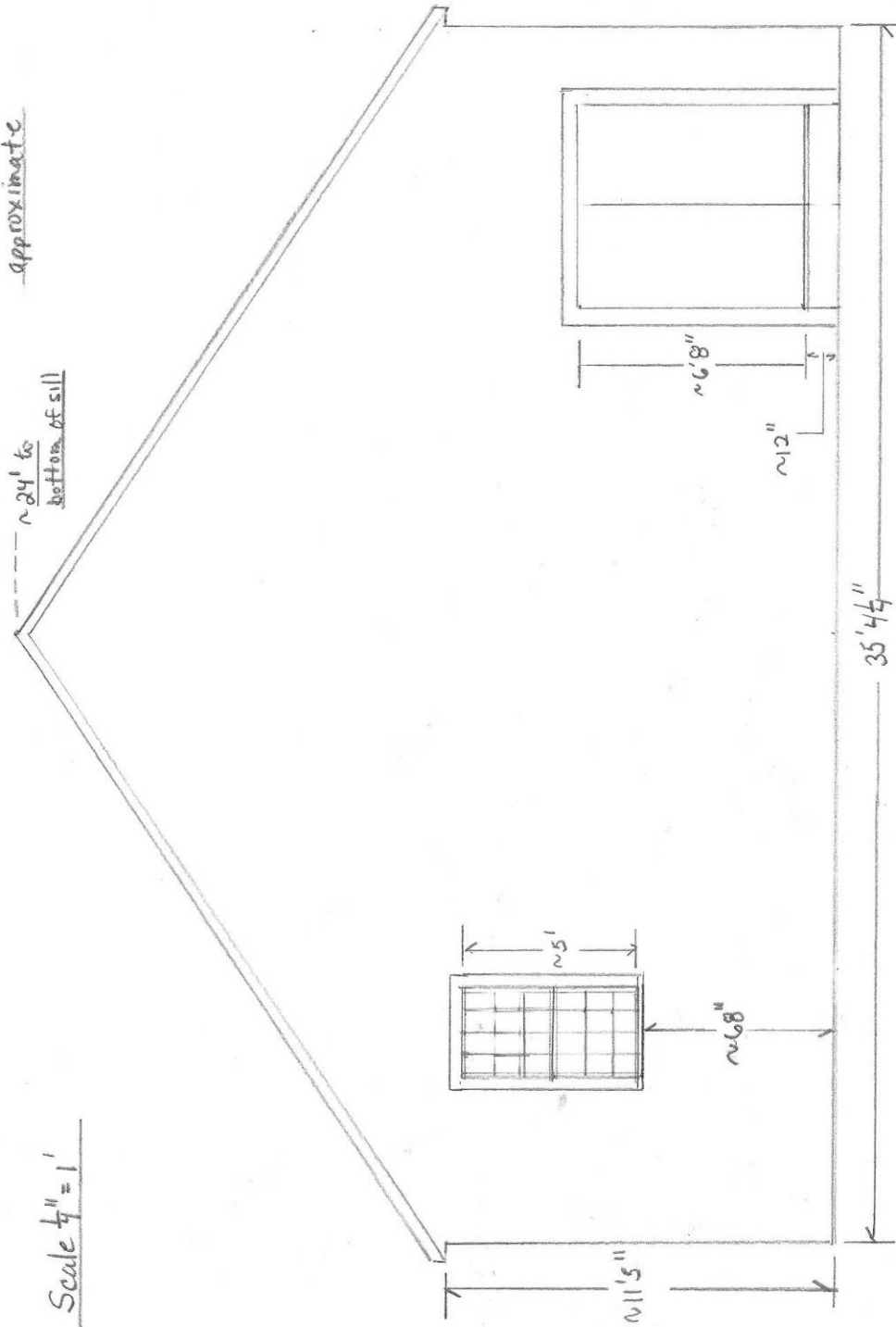
(scale may be slightly off in scanned images)



All exterior elements
are replacements
All measurements
approximate

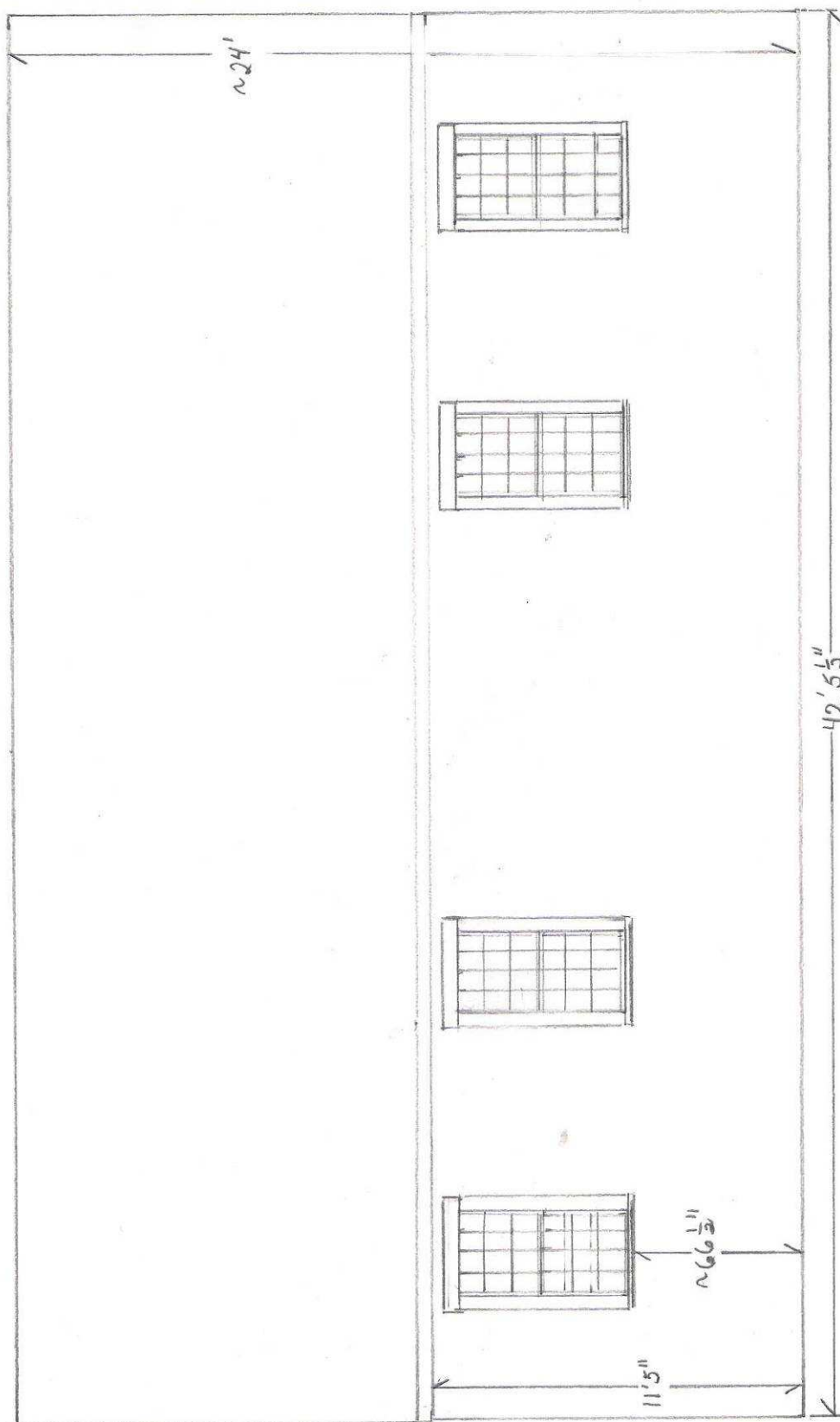
South Westerly (rear)

Scale $\frac{1}{4}" = 1'$



Scale $\frac{1}{4}" = 1'$

North Westerly
(South Easterly similar)



Scale $\frac{1}{4}'' = 1'$

ceiling height in building
varies from 10'7" - 10'10"
except in vestibule @ 7'-10"

exterior wall wainscot
height between 36 $\frac{1}{2}$ " - 38"
off of sub floor including
slanted cap.

Interior Partition facing road (from meeting room)

